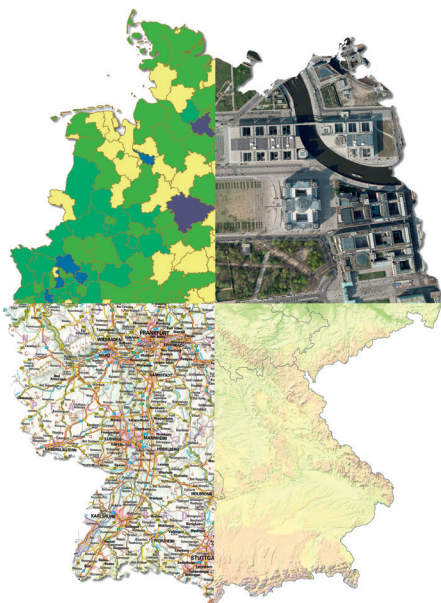




Federal Agency for
Cartography and Geodesy



Service Center

Central Distribution Office
for spatial base data

Service Center (DLZ)

The Service Center of the Federal Agency for Cartography and Geodesy provides its data to federal institutions, public administrations, economy, science and citizens. Competent staff analyze the individual needs and provide the customers with practical services and products.

Service for federal institutions

With the DLZ, federal institutions have a central contact point that provides data of the Federal Republic of Germany and Europe as well as a portfolio of web services. Furthermore, federal authorities receive comprehensive individual advice and support for implementing and applying forward-looking web services.

Data and services for economy and society

The Central Office for Geotopography (ZSGT) of the Working Committee of the Surveying Authorities of the States of the Federal Republic of Germany (AdV) operated at the Service Center provides cross-border digital topographic spatial base data of the Laender and a broad range of web services to economy, administration, science, education and citizens. The sale of the spatial base data by the ZSGT is carried out on behalf of and based on the conditions and product specifications provided by the AdV.



Tasks and range of services

- **Advice and support for federal institutions** on the use of spatial data
- Provision of **official spatial data of Germany** for Federal Government, economy, administration, education, science and citizens
- Provision of standardized services according to the specifications of the Infrastructure for Spatial Information in Germany and Europe **GDI-DE** and **INSPIRE**
- Provision of **free products** via an immediate download option in the “Open Data” area at the DLZ Internet portal
- **Central Service** with comprehensive information on availability, topicality, quality, range of applications, terms of use and purchase of the official spatial base data
- **Checking, harmonization and provision** of spatial base data of the Laender in the scale 1:25,000 to 1:100,000



Spatial base data - product types

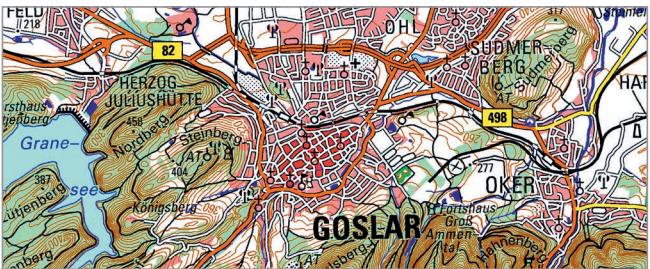
The DLZ offers Germany-wide official topographic spatial base data in multiple specifications. Mostly these are data sets of the ATKIS® (Authoritative Topographic-Cartographic Information System) in the scale range between 1:25,000 and 1:1,000,000.

Generally, the data are available in two formats:

- Pictorial raster data
- Feature-structured vector data

Raster data

Raster data are pictorial information. The representation of the features is based on a regular raster of color-coded picture elements (pixels). Raster data are generated by scanning maps or by symbolizing vector data and a subsequent raster conversion.



Example Digital Topographic Maps (DTK)

Digital Topographic Maps describe the most important natural and artificial features of the earth surface and the terrain forms.

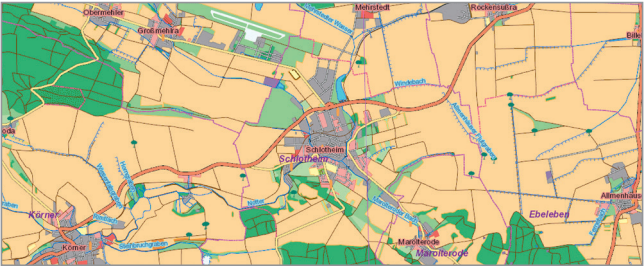
Example Digital Orthophotos (DOP)

Digital Orthophotos are rectified and georeferenced aerial images of the Federal Republic of Germany. The ground resolution is 40 or 20 centimeters.

Spatial base data - product types

Vector data

Vector data map the landscape geometrically in form of points, lines and areas. Objects are created by linking the geometry with feature attributes. The integration into geographical information systems (GIS) allows the visualization, lookup and evaluation of this information.



Example Digital Landscape Models

Digital Landscape Models describe the topographic features of the landscape in the form of vector data. They are classified in feature types and are characterized by descriptive attributes.

Example Digital Terrain Models

Digital Terrain Models contain elevation data in regularly arranged grid points with a defined mesh size of 5 to 1,000 meters.

Example Administrative areas

Administrative areas represent the administrative units from state to municipalities for the whole of Germany. Additionally, they are also available with data on population size.

Spatial data services

The BKG offers standardized web services for all available spatial base data (**Web Mapping Services**, **Web Mapping Tile Services**, **Web Feature Services**).

Advantages of using spatial base data via web services:

- No local data infrastructure necessary
- Access to current data at any time
- Combination of various contents in interactive maps

Example WebAtlasDE

WebAtlasDE is a Germany-wide Internet map service provided by AdV and BKG. It is available as WMS and WMTS, in color or grayscale.



Example Orthophotos

Germany-wide Digital Orthophotos are offered online via web services. WMS and WMTS services can be used in custom web applications or for downloading the Orthophotos under the corresponding license.



Web applications

A number of interactive maps can be found on the websites of the DLZ. Using these maps diverse geographic data can be visualized and searched Germany-wide.

Example BKG GeoCoder



BKG GeoCoder is a web application for assigning geographic coordinates to postal addresses, place names, street names or postcodes. By applying the Geocoder, registers with mass address-related entries can be easily geo-coded automatically - this means, the register entries get a spatial position description in the form of a coordinate.

Example DOP Viewer

The web application DOP Viewer provides the user with free Germany-wide **D**igital **O**rthophotos with 40 centimeters ground resolution. This application has an integrated place search for user-friendly navigation. In addition, various overlay layers are available to the user for better orientation in the aerial image.



Web applications

Example Map Viewer

With the Map Viewer of DLZ' Internet portal every user gets the possibility of accessing comprehensive information on contents and range of the BKG products.

Example Coordinate Transformation

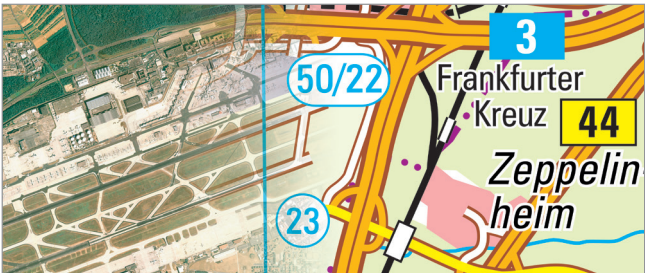
An overview of the most common coordinate systems and details on their definition and use can also be found on the Internet page of the DLZ. Furthermore, the free web application allows converting between different coordinate systems.

Example Overviews of Topicality

For many available products, the overviews of topicality can be viewed as graphic application, shapefiles or list on the web pages of the DLZ. Moreover, users get information about data, which are currently in processing and will soon be ready for supply.

Your benefits at a glance

- Competent and central contact for the supply of spatial base data
- Ordering of spatial base data and services via a convenient online shop system or by email to dlz@bkg.bund.de
- Provision of harmonized cross-border spatial base data, web services and web applications
- Constant updates of the spatial base data
- Quality and topicality of the spatial base data that can be transparently retraced in accompanying metadata and overviews of topicality at any time
- Free download of all small-scale federal spatial base data (Open Data) according to the Federal Georeference Data Act (scale range 1:250,000 and smaller) under www.geodatenzentrum.de



Our product catalogs give you a comprehensive overview over the product portfolio and the web services on www.geodatenzentrum.de.

Contact

Internet: www.bkg.bund.de
www.geodatenzentrum.de



Service Center (DLZ)

Email: dlz@bkg.bund.de
Phone: +49 341 5634-333 Fax: +49 341 5634-415

Central Office Frankfurt am Main

Bundesamt für Kartographie und Geodäsie
Richard-Strauss-Allee 11
60598 Frankfurt am Main
Phone: +49 69 6333-1 Fax: +49 69 6333-235

Branch Office Leipzig

Bundesamt für Kartographie und Geodäsie
Außenstelle Leipzig
Karl-Rothe-Straße 10-14
04105 Leipzig
Phone: +49 341 5634-0 Fax: +49 341 5634-415

Geodetic Observatory Wettzell

Bundesamt für Kartographie und Geodäsie
Geodätisches Observatorium Wettzell
Sackenrieder Straße 25
93444 Bad Kötzing
Phone: +49 9941 603-0 Fax: +49 9941 603-222